

# FRANKLIN ANIMAL SHELTER UPGRADE and EXPANSION PLAN

After many years of using the existing building "as-is", the Board of Directors of the Franklin Animal Shelter has begun a long-range planning process with a goal of improving the existing building and a modest expansion with an addition to the building. This campaign will be managed in two phases.

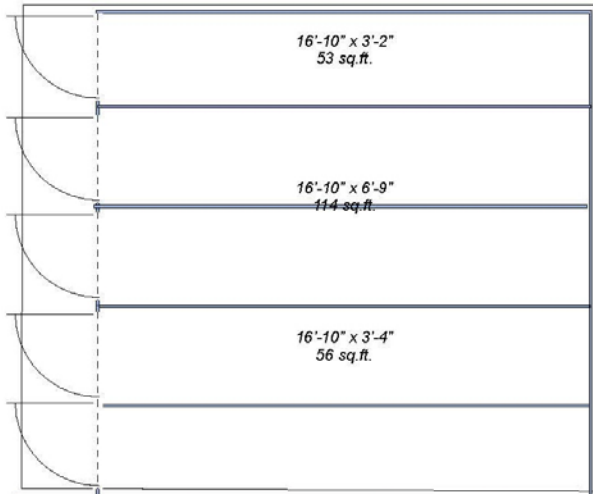
## PHASE ONE DETAILS:

The first phase includes the removal of all of the existing dog kennels and cat crates and replacement with purpose-built kenneling and crating systems. This project also includes reconfiguring the covered outside runs to accommodate doors which will allow the dogs free access to the outside without having to physically move them.

This first phase will be broken down into three stages. Stage 1 will include removal of the existing 8 dog kennels and replacement with new systems. Stage 2 will remove the 9 existing cat crates and install a new crating system to accommodate up to 12 cats. Stage 3 will address the outside runs by removing the chain link runs and replacing them with new systems. This stage will also add doors between the inside kennels and the outside runs.

The estimated cost of Phase One is \$21,000.00

The following page illustrates the existing floor plan and the changes that will be made by this phase.

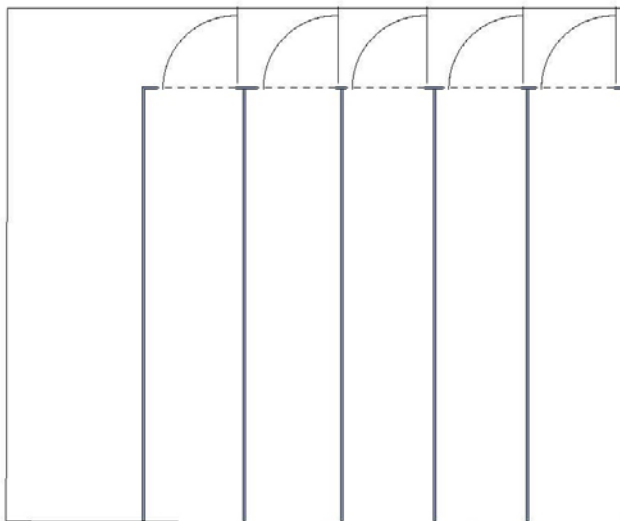
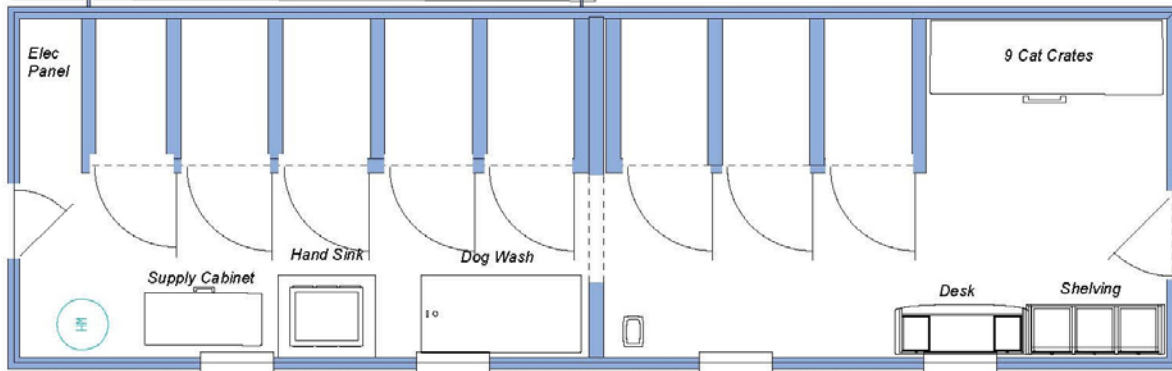


### Current Shelter Plan 12' x 40'

**Internal Dog Kennels:** 7 kennels 36" x 60" internal dimensions.  
1 kennel 30" x 60" internal dimension  
All kennel walls built with 6" cinderblocks  
All kennel doors are pipe & chainlink

**Cat Crates:** 9 individual fiberglass crates  
Built into 2x4 wall

**Exterior Dog Runs:** 5 runs undercover running parallel to shelter.  
Chainlink construction of walls and gates



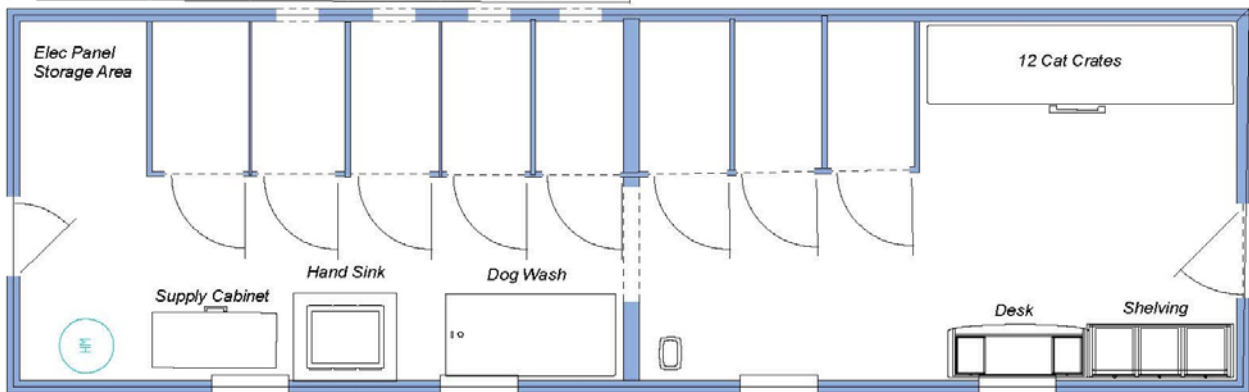
### Shelter Upgrade Project

**Stage 1:** Demo existing cinderblock kennels.  
Cover kennel back wall with 3/4" plywood and paint.  
Install 8 new 36" kennels with gates.  
Stage 1 Cost Est: \$8,800

**Stage 2:** Remove existing 9 cat crates.  
Install 12 modular cat crates.  
Stage 2 Cost Est: \$6,900

**Stage 3:** Exterior Runs  
Remove chainlink gates and sides on outside covered runs  
Install exterior run panels and gates  
Cut thru Shelter wall & install guillotine doors  
Stage 3 Cost Est: \$5,200

**Total Project Cost:** \$20,900



## PHASE TWO DETAILS:

Phase two of the campaign entails two stages. The first stage is an addition to the rear of the existing shelter building. This addition is planned to be large enough to accommodate areas for a lobby, office, new spaces for cats, a bathroom and storage space. With the completion of the addition, stage 2 will allow for the movement of the cat crates to a new space. When the cats are moved, dog kennels will be added in the shelter space previously occupied by cat crates. When stage 2 is complete, the old shelter building will accommodate 10 dogs in two segregated areas; six kennels will house adoptable dogs and the other area will house quarantine space for four dogs and three cats. This will finally ensure that dogs and cats brought to the shelter and not ready for adoption or being held for the police pound needs can be held away from healthy animals prepared for adoption.

The following page contains a rendering of the expanded shelter building and a proposed floor plan illustrating the space usage in the new facility.

The estimated cost of Phase Two is \$65,000.

This campaign represents a major commitment for the dogs and cats the Shelter protects. It requires the support of the community at-large to be successful. As a demonstration of our commitment, the Board of Directors has pledged \$10,000 in a matching contribution program. For every dollar received in donations, the Board members will match until \$10,000 in donations has been received. This is an excellent opportunity to leverage your donation and jump start the project.

Please consider supporting the campaign by donating. Donations can be made online with credit cards and debit cards at [www.franklinanimalshelter.com](http://www.franklinanimalshelter.com). Donations may also be sent directly to the shelter at PO Box 265, Franklin, NH 03235. Donations by check should contain "Shelter Upgrade" in the memorandum line.

